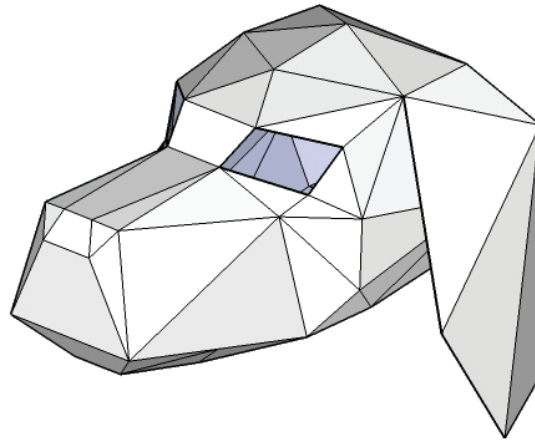




WINTERCROFT



BEAGLE MASK

Designed by Steve Wintercrott

Materials required

- ☐ Access to a printer and 14 sheets of A4 paper or US Letter paper.
- ☐ Thin card, the type used in cereal boxes is ideal. Thicker card like corrugated card will not bend to the detailed folds. The approximate area of flat card that you need is around three large cereal boxes or a sheet and a half of A2 card.
- ☐ Spray mount, Pritt stick, PVA or something that will stick paper to card.
- ☐ Scissors or a craft knife.
- ☐ Straight forward sticky tape, you can use basic cheap tape but I've found that Scotch Magic invisible tape gives a neater finish.
- ☐ Some spare time – approximately 2 to 3 hours.

Printing instructions

- ☐ The templates are 1:1 scale and are intended to be printed at ACTUAL SIZE on either A4 paper (210mm X 297mm) or US Letter paper (8½" X 11"). In your printer setting please select the type of paper that you are printing on but DO NOT SCALE THE TEMPLATES TO FIT THE PAPER.
- ☐ I have included a 150mm line on the first page of the templates so that you can check the scale. The line should measure 150mm after printing but plus or minus 2mm is acceptable. There is more information on printing the templates in our FAQ section of the website.

Instructions for assembly

1. Having printed the templates on paper, trim them roughly to the approximate size, they don't have to be neat. Trimming off the excess paper makes it easier to arrange the templates on the card.
 2. Unfold your boxes so that you have flat sheets of card to work with, then glue the templates to the card. When you assemble your mask your templates will be on the inside faces of the mask. First choice for gluing the templates would be Spray Mount. It's available from most art shops but can be expensive. Pritt Stick is a cheaper alternative and also works really well.
 3. Cut out the templates along the solid outlines. Cut the solid outlines only, not the dashes.
 4. The fold lines on the templates are marked as either a dashed line representing a valley fold or dashes with dots to represent a mountain fold. This is with the templates on the inside of the mask.
 5. Score all of the valley folds marked on templates with either a blunt knife or scissors. Then find the parts with mountain folds, flip them over and score them on the reverse side. Score and fold all of your parts.
 6. Start matching up the numbers on the templates and tape together the edges with corresponding numbers. Taping on the outside makes things easier for most parts but if you come to a part that is difficult to tape outside, try taping inside the mask. If a join feels like it is under stress, tape it inside and out to reinforce it.
 7. Once you have built your mask, make the head band following the instructions on the final page and tape it to the inside of the mask. You might need to adjust the band forward or back to get the best fit.
- If you run in to any problems or have any questions please check the frequently asked questions on:

www.wintercrafter.com

If you still can't find the answer to your questions, then please send me a message to the address in the contacts below.



Dashed line represents a valley fold.



Dashed line with dots represents a mountain fold.

Please note

These designs are copyrighted and are intended for your own personal use only. Please use this file to make as many masks as you like for yourself.

Please don't share or steal the templates, there was a lot of work involved in creating them. If you want to use them for any other reason then please get in touch.

THESE MASKS ARE A PERSONAL CRAFT PROJECT, PLEASE DO NOT USE THEM FOR PROFIT.

Contact us

I would love to see your finished creations, please share them on my Facebook page:

www.facebook.com/wintercraftermasks

or use the Instagram handle:

@wintercrafter

Many thanks and have fun,
Steve

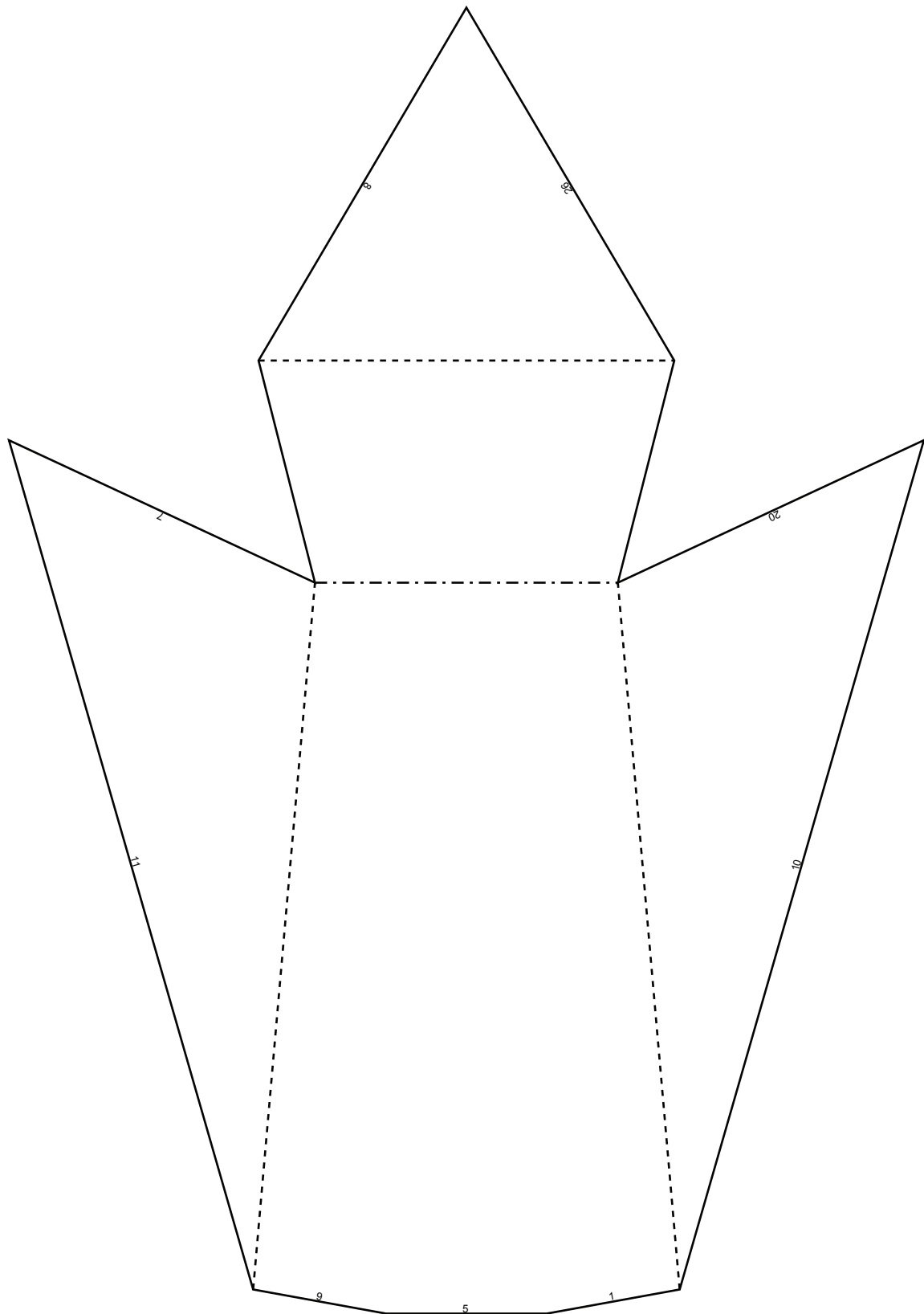
info@wintercrafter.com

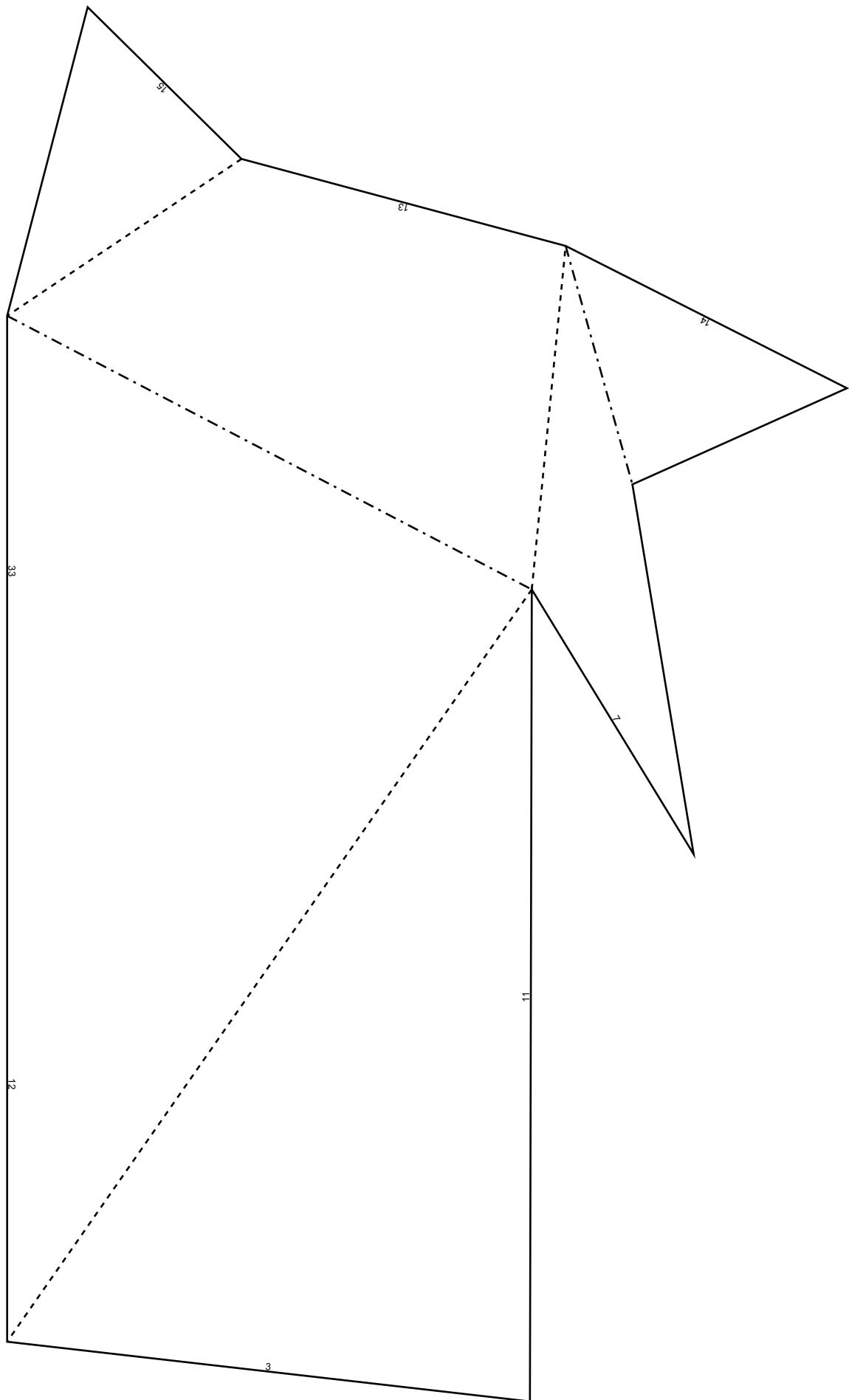


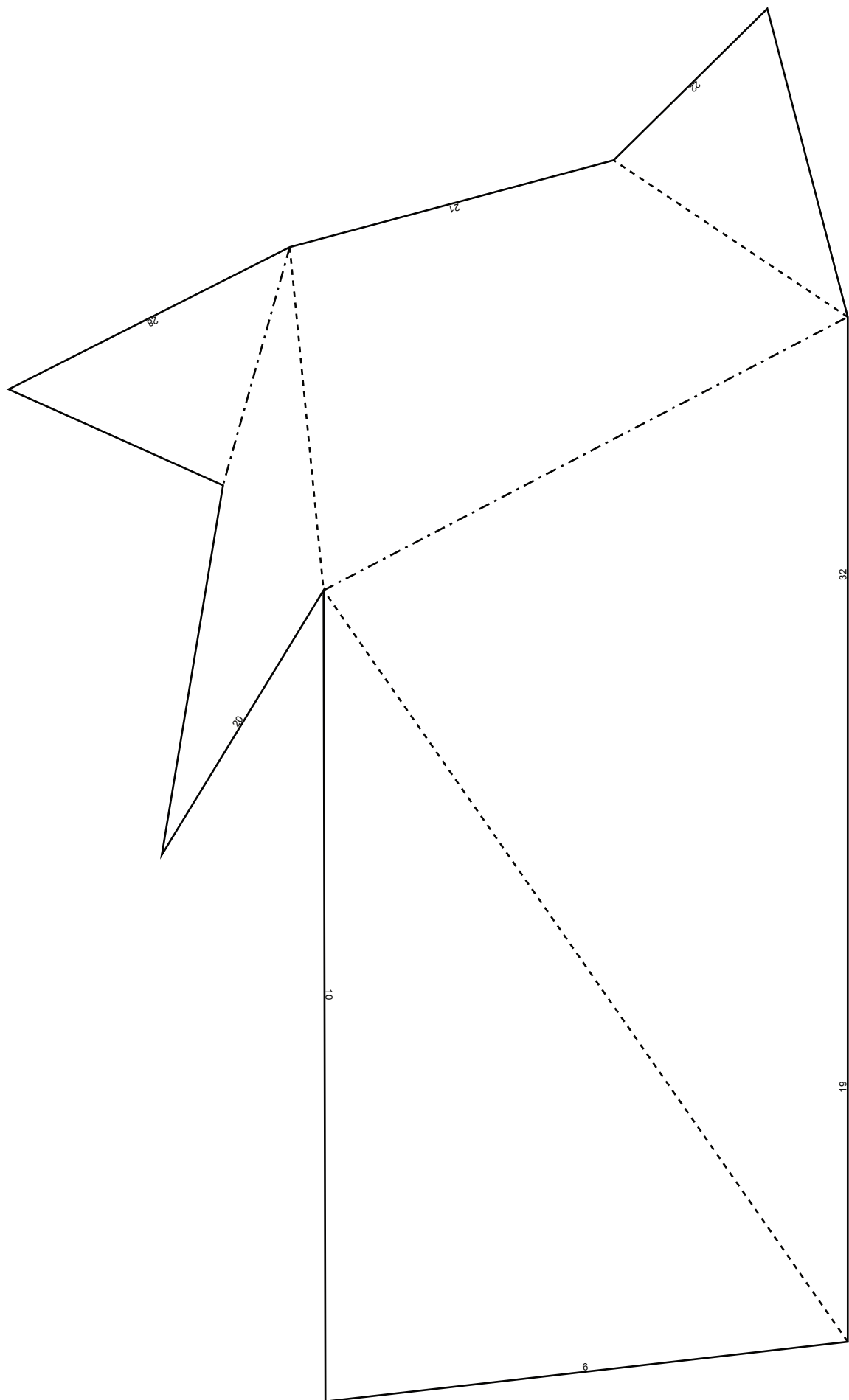
WINTERCROFT

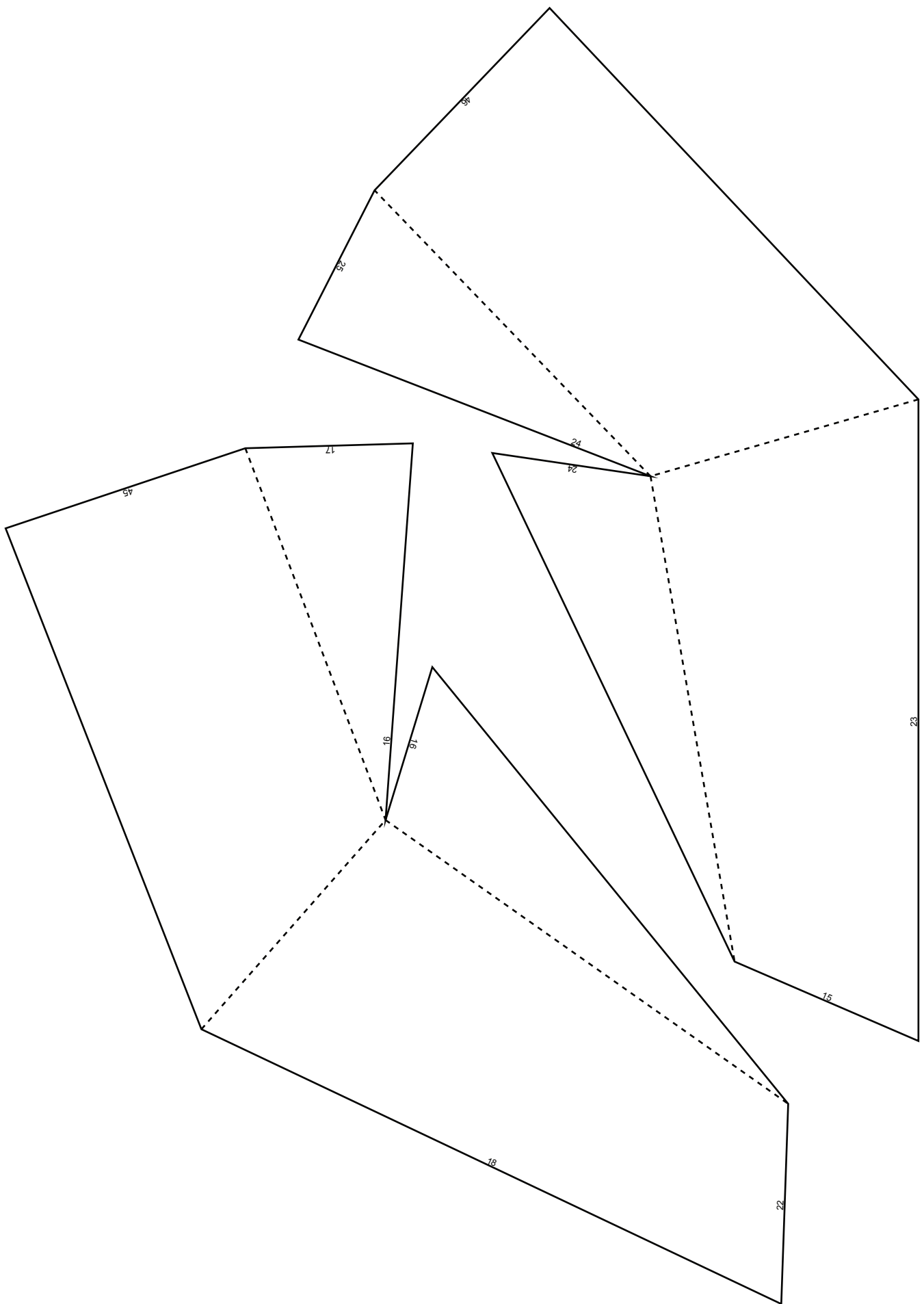
Scale Guideline

To check the scale is correct, the line below should be 150mm from end to end.

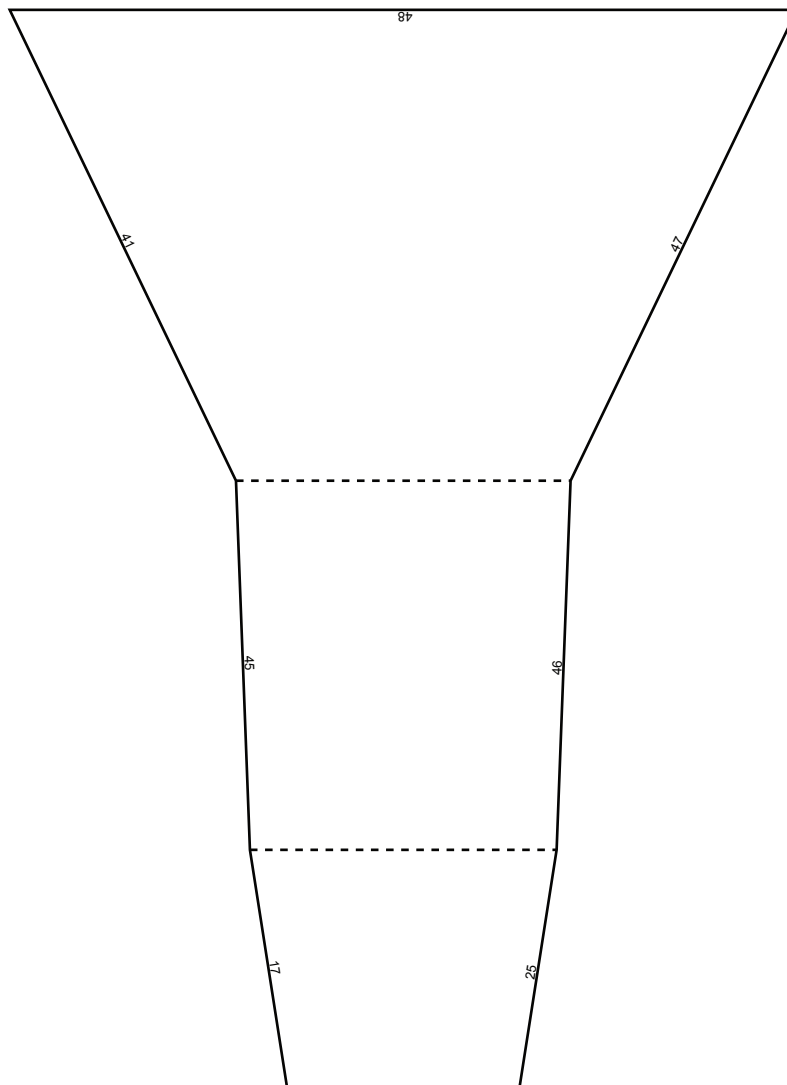
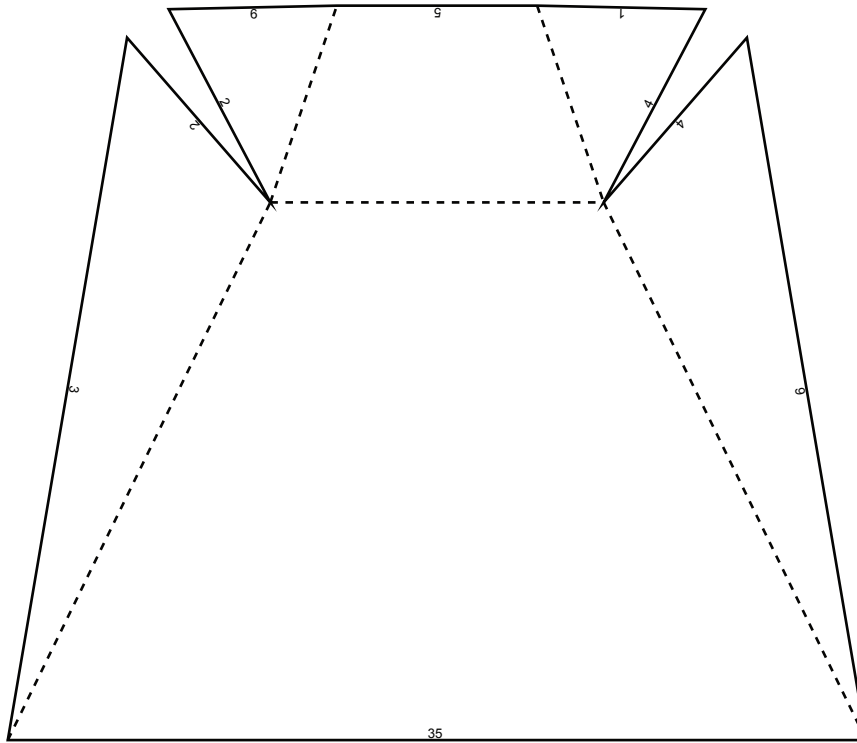


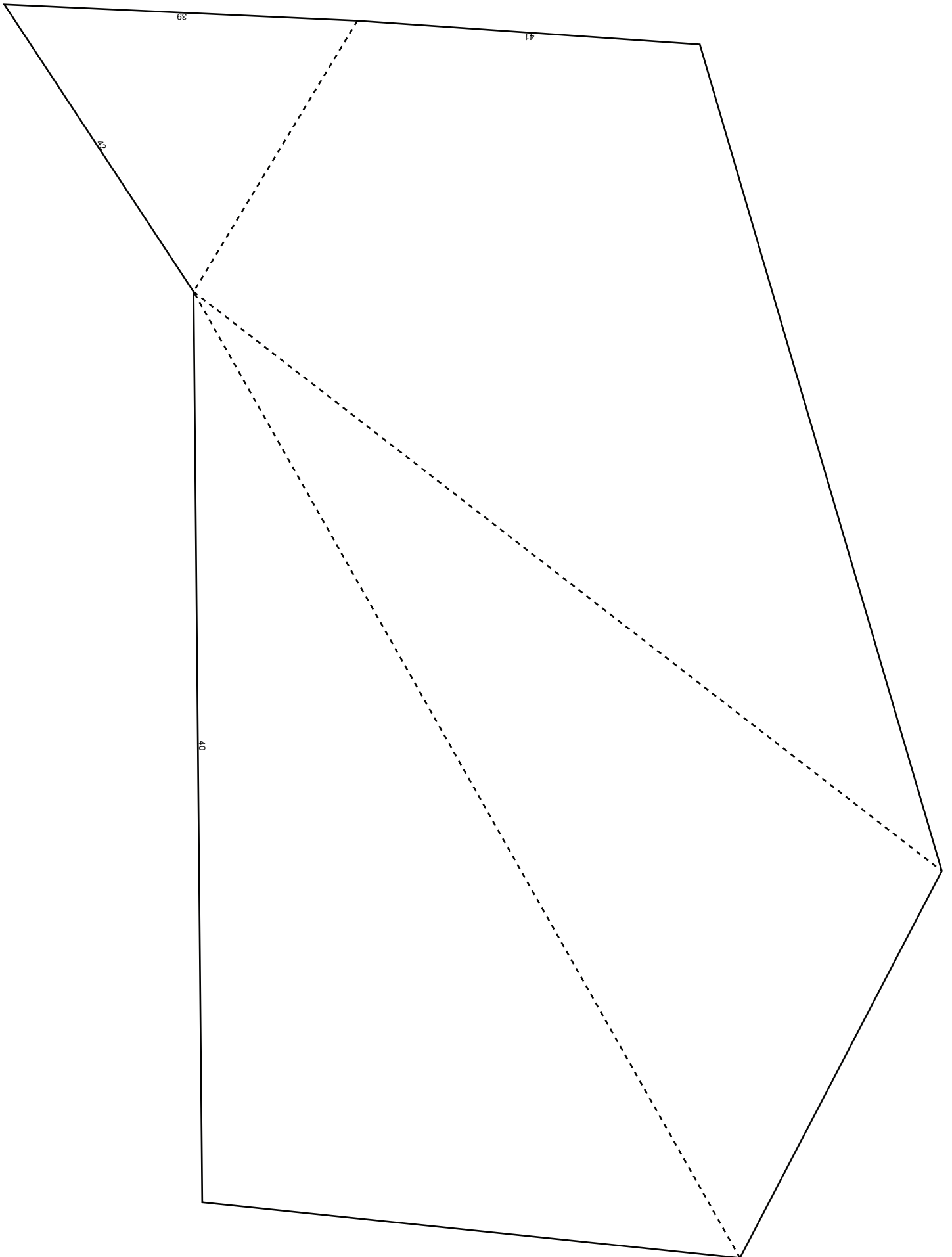


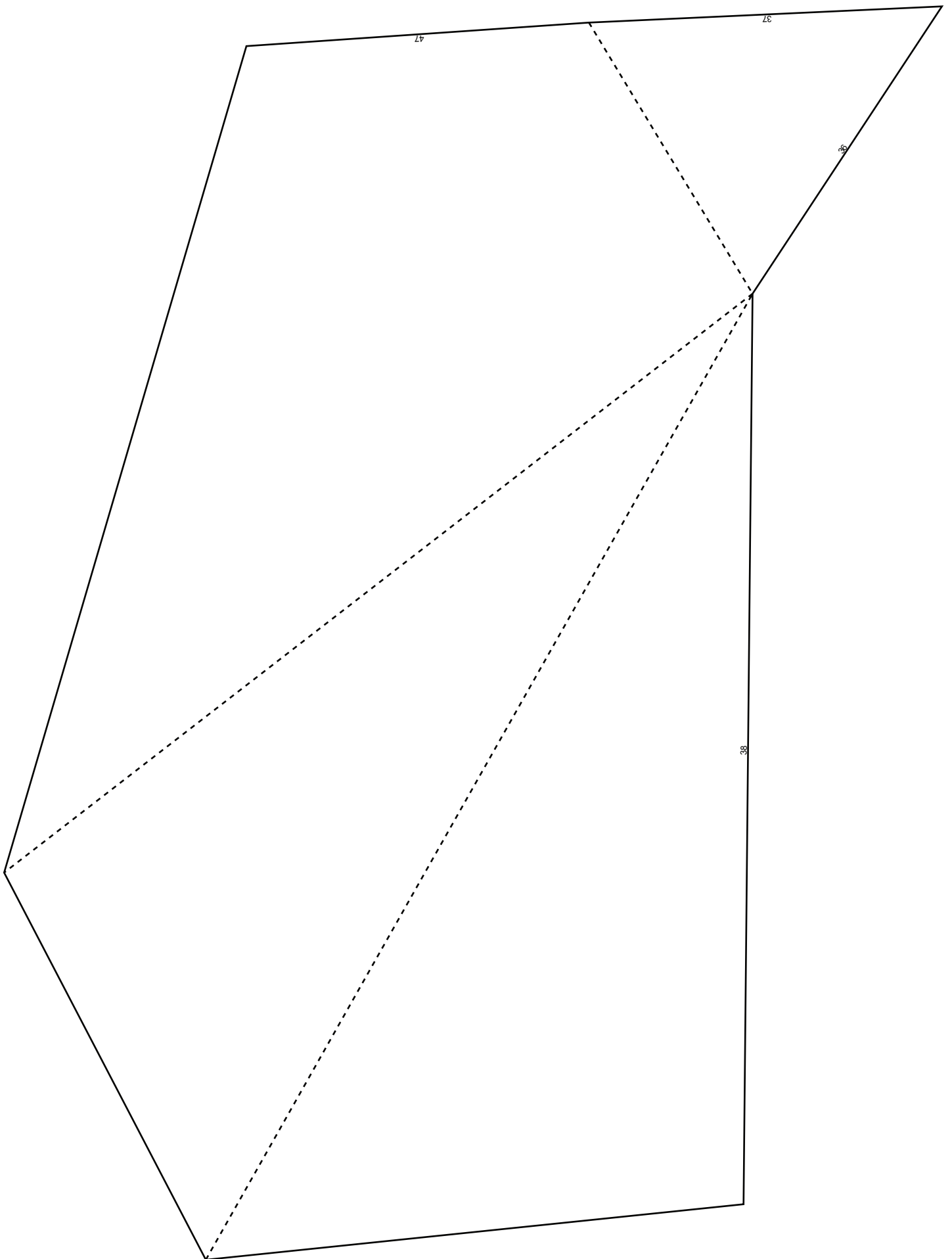


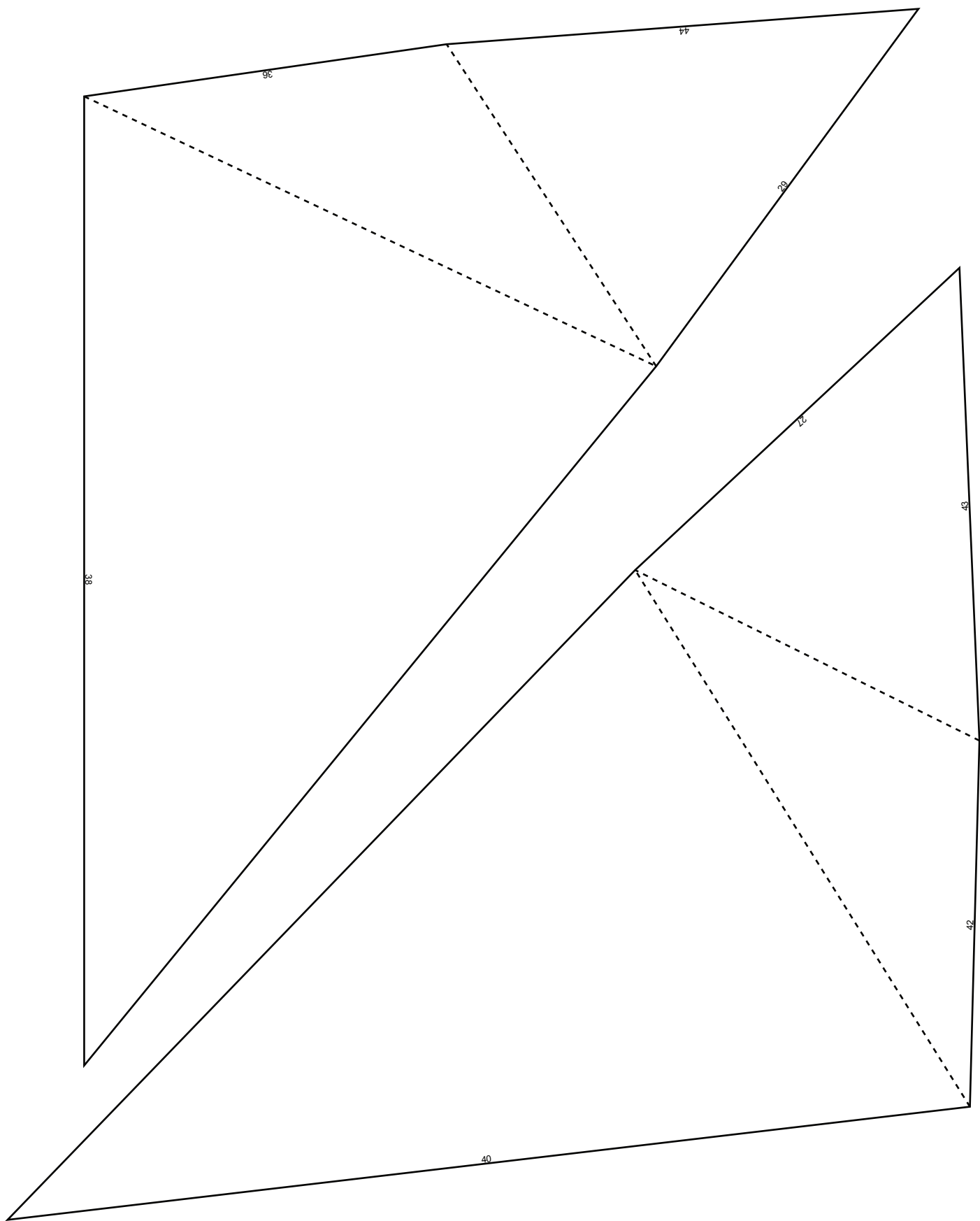


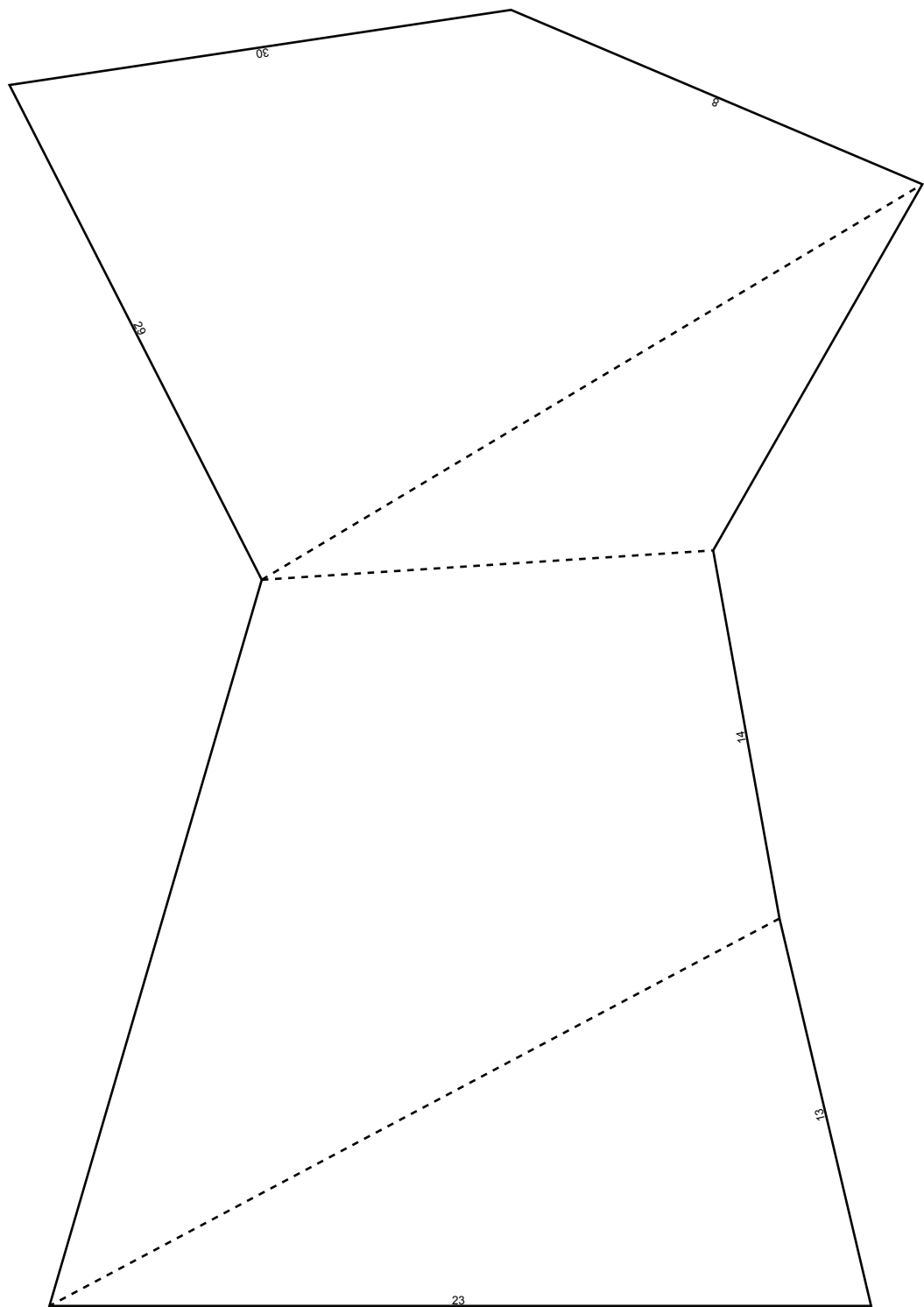


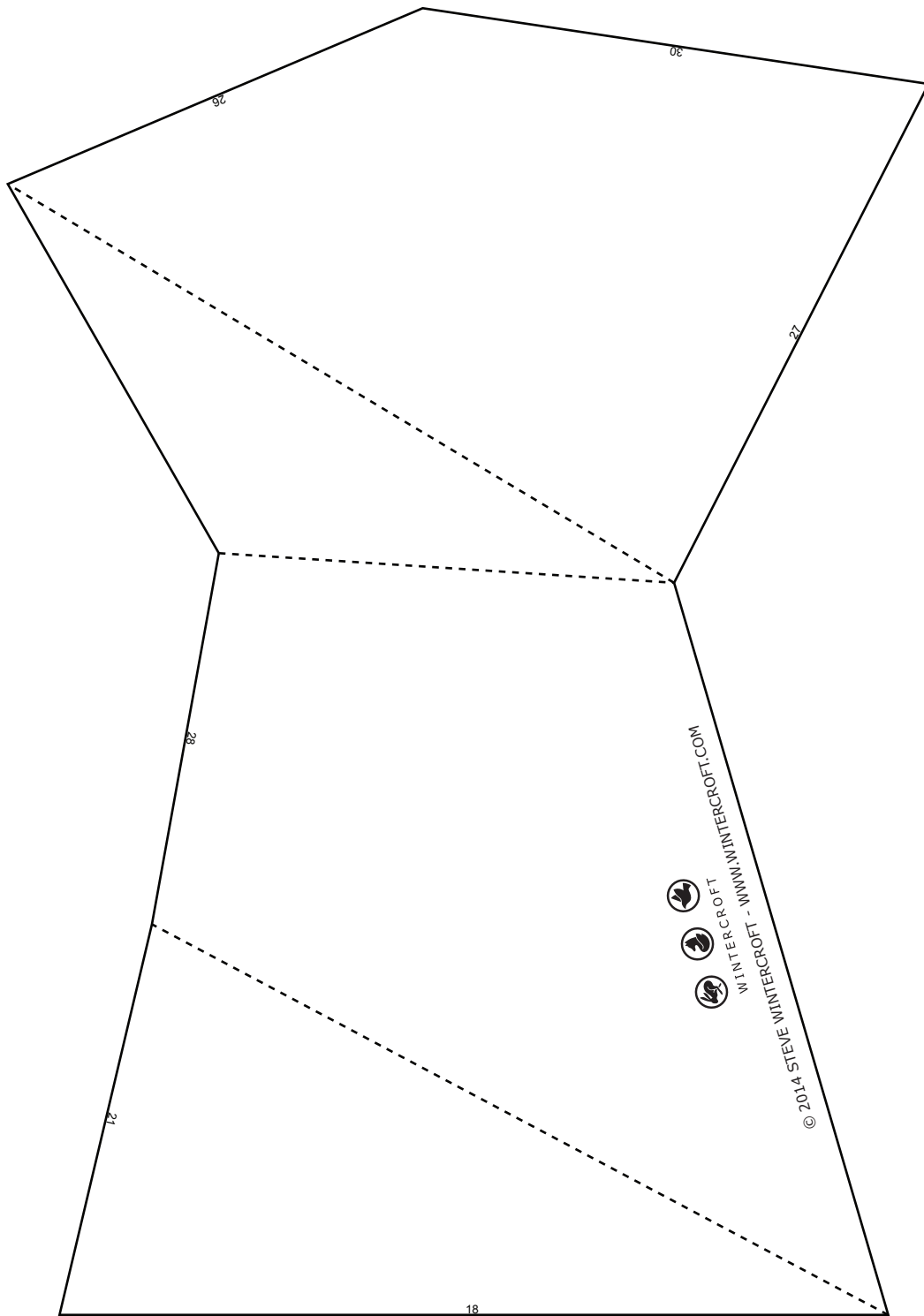












© 2014 STEVE WINTERCROFT - WWW.WINTERCROFT.COM
WINTERCROFT



WINTERCROFT

Head Band

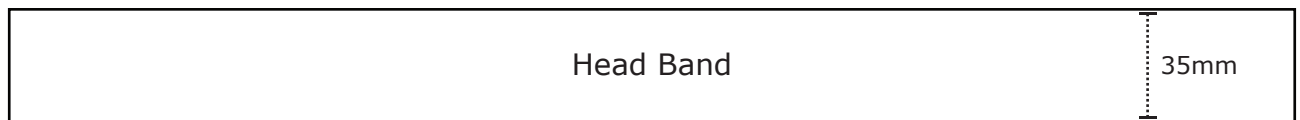
To ensure the completed mask fits well you can make a head band and fit it inside of the mask.

Instructions for assembly

1. Cut two strips of card to roughly the dimensions below and the tape one end together.
2. Then wrap the band around your head and tape the other end to get a good fit. The band should be snug but not tight.
3. Take the band off your head and tape the tabs to the inside of the mask.
4. You might need to move the tabs around a little until you get it fitting right.

NOT TO SCALE

400mm



Cut two pieces of card at these dimensions

60mm

40mm

Tape to the inside of the mask here

Tape together here

Tape to the inside of the mask here

Tape together here

